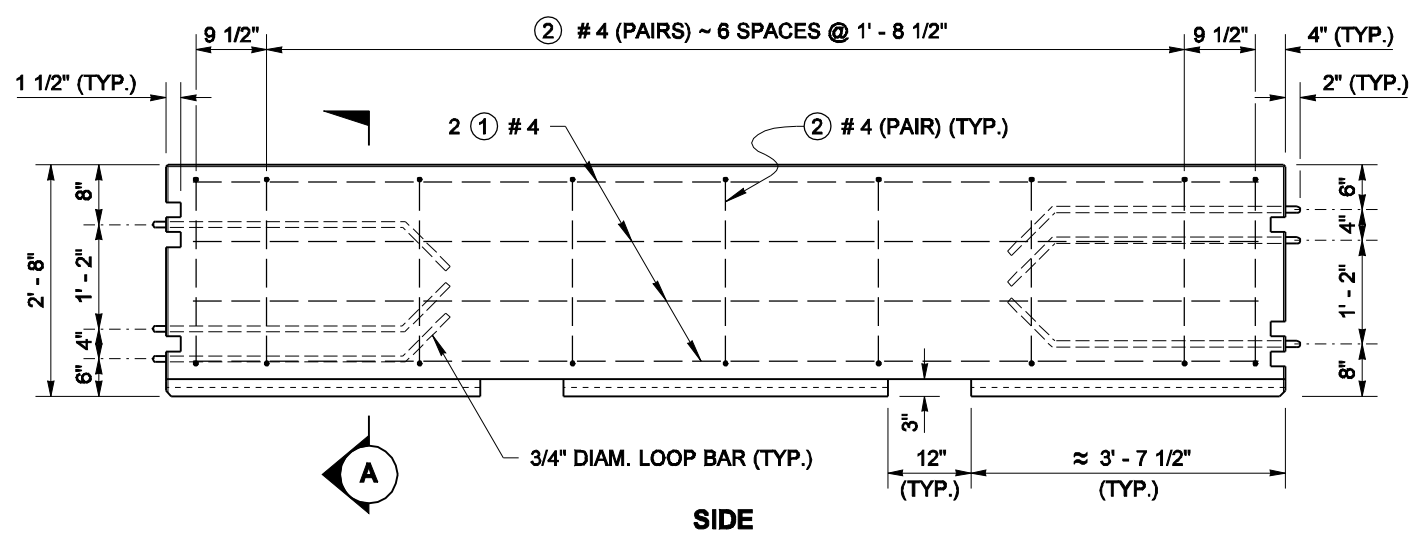
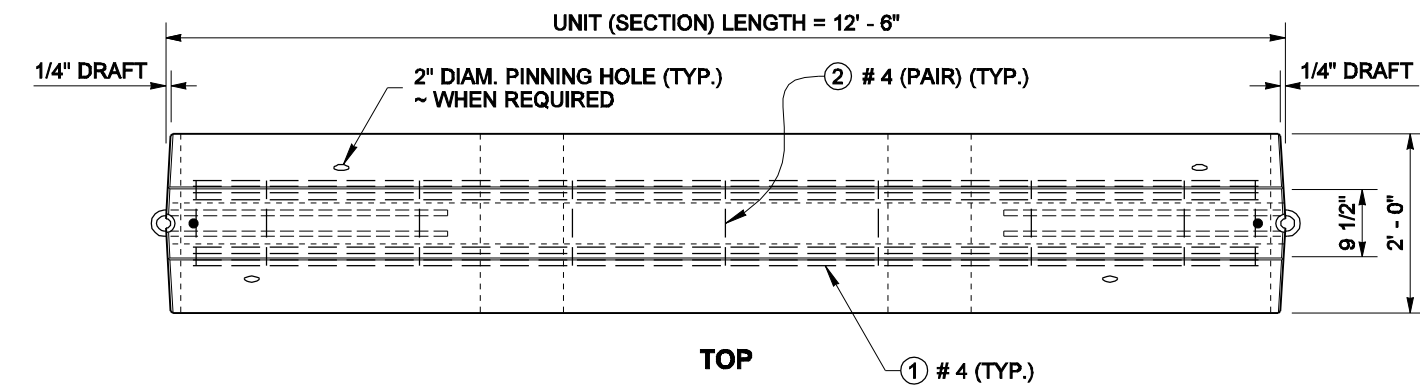
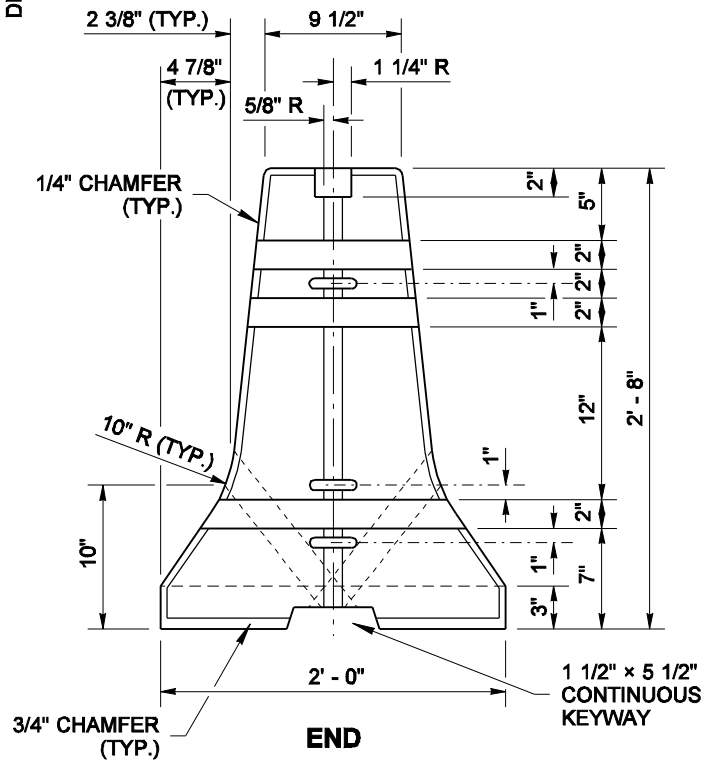
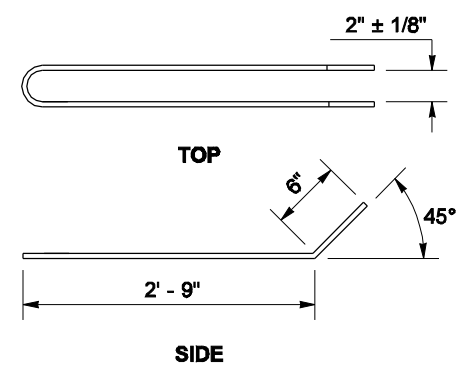
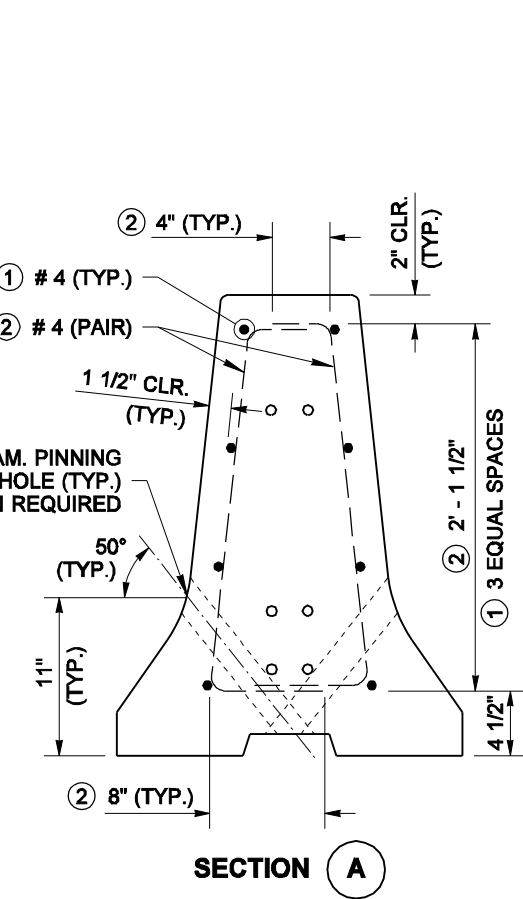
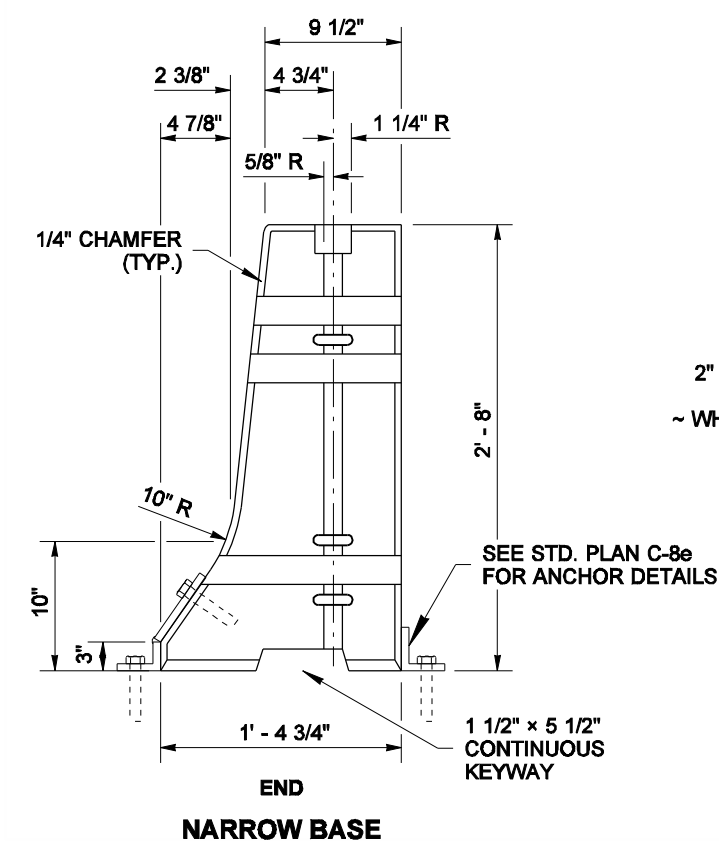
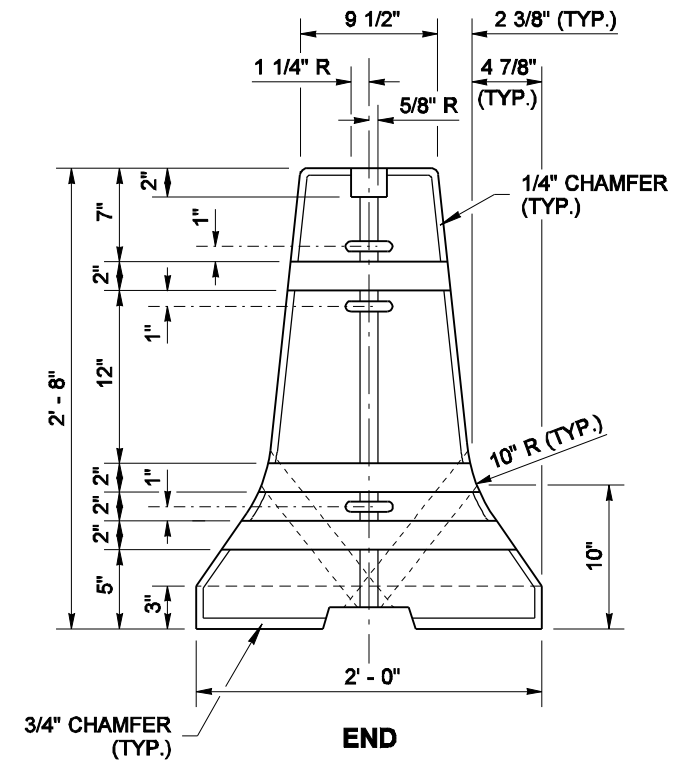


DRAWN BY: MARK SUJKA

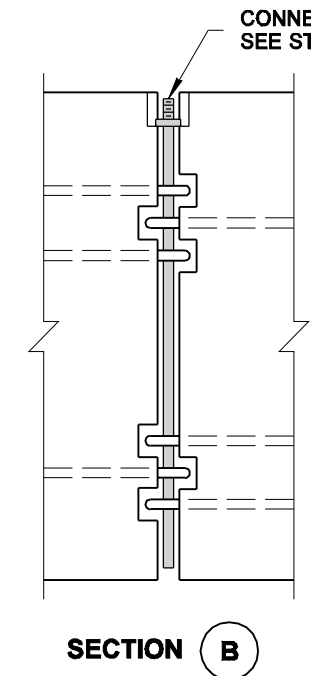
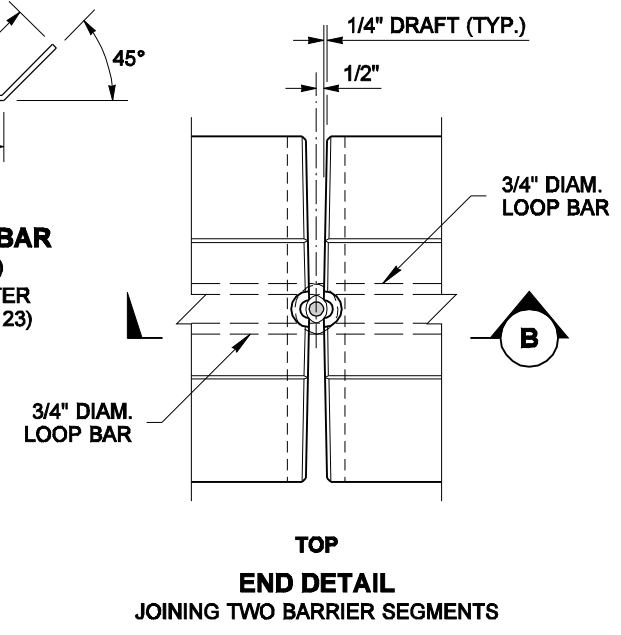


NOTES

1. The reinforcing steel details for the NARROW BASE barrier are the same as those shown for the 2' wide barrier except that the bars along the vertical face run vertically with a 1 1/2" clearance.
2. The vertical dimensions for the slots and loop bar locations on the NARROW BASE barrier are the same as those shown on the END views of the 2' wide barrier.



ALTERNATIVE LOOP BAR
 3/4" DIAM. (ASTM A 36)
 HOT DIP GALVANIZE AFTER FABRICATION (ASTM A 123)



EXPIRES JULY 24, 2008

**ALTERNATIVE
 TEMPORARY CONC. BARRIER
 (F-SHAPE)
 STANDARD PLAN K-80.30-00**

SHEET 1 OF 1 SHEET

APPROVED FOR PUBLICATION

Ken L. Smith 02-21-07
 STATE DESIGN ENGINEER DATE



NOTE: THIS PLAN IS NOT A LEGAL ENGINEERING DOCUMENT BUT AN ELECTRONIC DUPLICATE. THE ORIGINAL, SIGNED BY THE ENGINEER AND APPROVED FOR PUBLICATION, IS KEPT ON FILE AT THE WASHINGTON STATE DEPARTMENT OF TRANSPORTATION. A COPY MAY BE OBTAINED UPON REQUEST.