

LONGITUDINAL BUFFER SPACE = B										
POSTED SPEED (MPH)	25	30	35	40	45	50	55	60	65	70
LENGTH B (FEET)	155	200	250	305	360	425	495	570	645	730








SIGN SPACING = X (1)		
RURAL HIGHWAYS	60 / 65 MPH	800' ±
RURAL ROADS	45 / 55 MPH	500' ±
RURAL ROADS & URBAN ARTERIALS	35 / 40 MPH	350' ±
RURAL ROADS, URBAN ARTERIALS, RESIDENTIAL & BUSINESS DISTRICTS	25 / 30 MPH	200' ± (2)
URBAN STREETS	25 MPH OR LESS	100' ± (2)
ALL SIGNS ARE BLACK ON ORANGE UNLESS DESIGNATED OTHERWISE		

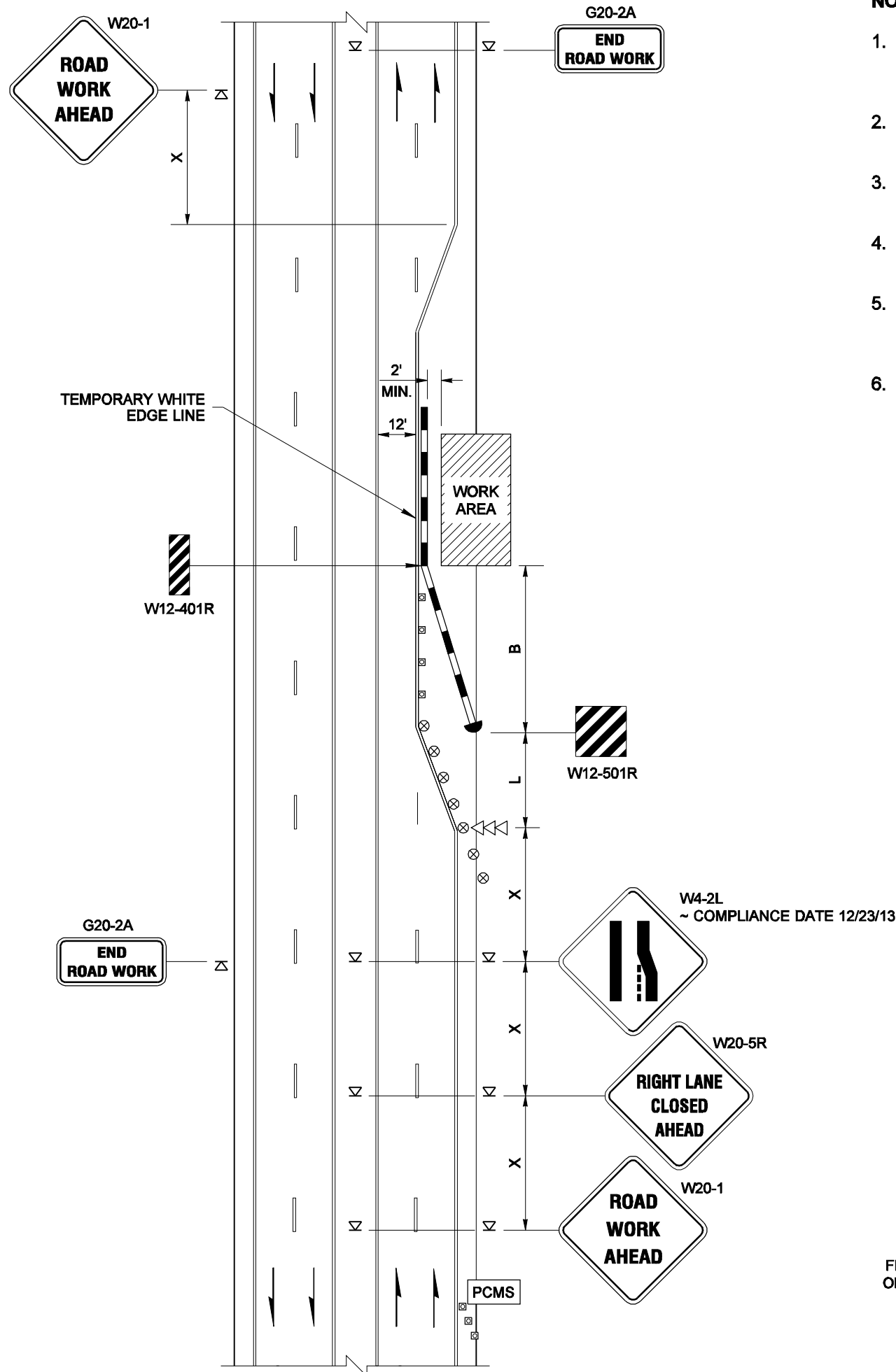
- (1) ALL SIGN SPACING MAY BE ADJUSTED TO ACCOMMODATE INTERCHANGE RAMP, AT-GRADE INTERSECTIONS, AND DRIVEWAYS.
- (2) THIS SIGN SPACING MAY BE REDUCED IN URBAN AREAS TO FIT ROADWAY CONDITIONS.

MINIMUM TAPER LENGTH = L (FEET)										
LANE WIDTH (FEET)	POSTED SPEED (MPH)									
	25	30	35	40	45	50	55	60	65	70
10	105	150	205	270	450	500	550	-	-	-
11	115	165	225	294	495	550	605	660	-	-
12	125	180	245	320	540	600	660	720	780	840

CHANNELIZING DEVICE SPACING		
POSTED SPEED (MPH)	IN TAPER (FEET)	IN TANGENT (FEET)
50 / 65	40	80
35 / 45	30	60
25 / 30	20	40

LEGEND

-  SIGN LOCATION
-  CHANNELIZING DEVICES
-  TEMPORARY CONCRETE BARRIER WITH REFLECTORS
-  PORTABLE CHANGEABLE MESSAGE SIGN
-  ARROW PANEL
-  TRAFFIC SAFETY DRUM
-  TEMPORARY IMPACT ATTENUATOR



NOTES

- Existing conflicting pavement markings that are no longer applicable shall be removed or obliterated. Temporary markings shall be used as necessary.
- Steady-Burn Warning Lights (Type C, MUTCD) shall be used to mark Channelizing Devices at night.
- Exposed ends of Concrete Barriers shall be tapered outside the clear zone or fitted with impact attenuators.
- Roadside Barrier and End Treatment shall be crashworthy. Refer to Design Manual, Chapter 710 & 720, for barrier and attenuator information.
- Temporary concrete barrier may be Type 2 (see Standard Plan C-8) or Alternative (see Standard Plan K-80.30). Anchoring may be required (see Standard Plans K-80.35 and K-80.37).
- For signs size refer to Manual on Uniform Traffic Control Devices (MUTCD) and WSDOT Sign Fabrication Manual M55-05.

LONGITUDINAL BARRIER FLARE RATES		
POSTED SPEED (MPH)	ANCHORED BARRIER	UNANCHORED BARRIER
60	18 : 1	16 : 1
55	16 : 1	14 : 1
50	14 : 1	12 : 1
45	12 : 1	11 : 1
40 OR BELOW	11 : 1	10 : 1

**FOR LOCAL AGENCY USE ONLY
NOT FOR USE ON STATE ROUTES**



EXPIRES AUGUST 9, 2009

**SINGLE LANE CLOSURE
WITH TEMPORARY
CONCRETE BARRIER
STANDARD PLAN K-24.80-01**

SHEET 1 OF 1 SHEET

APPROVED FOR PUBLICATION

Pasco Bakotich III 10-12-07
STATE DESIGN ENGINEER DATE



PCMS SAMPLE MESSAGE	
1	2
RIGHT LANE CLOSED	ONE MILE AHEAD
1.5 SEC	1.5 SEC

FIELD LOCATE IN ADVANCE OF LANE CLOSURE SIGNING

NOTE: THIS PLAN IS NOT A LEGAL ENGINEERING DOCUMENT BUT AN ELECTRONIC DRAWING. THE ORIGINAL, SIGNED BY THE ENGINEER AND APPROVED FOR PUBLICATION, IS KEPT ON FILE AT THE WASHINGTON STATE DEPARTMENT OF TRANSPORTATION. A COPY MAY BE OBTAINED UPON REQUEST.