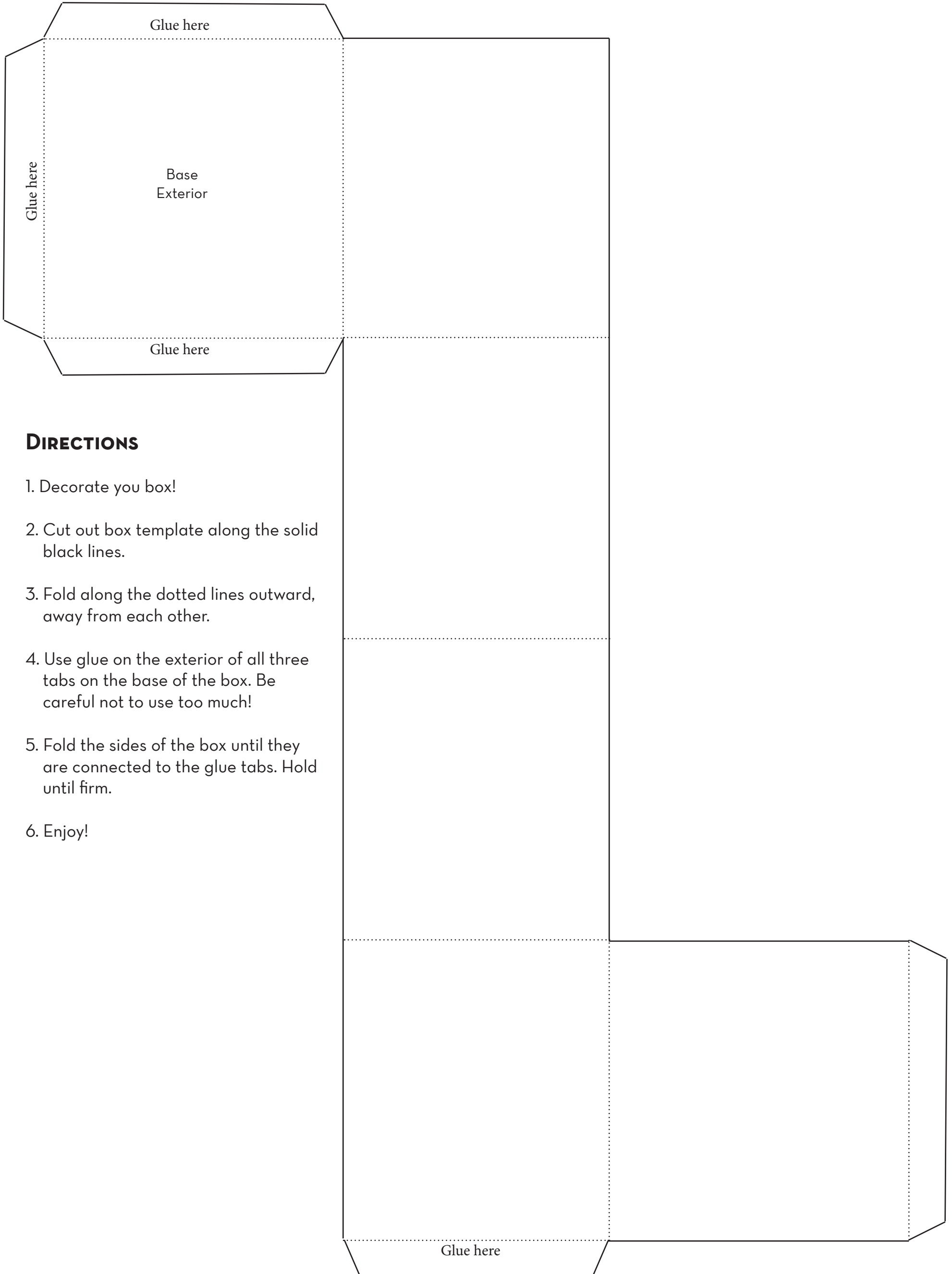


# RENTON HISTORY MUSEUM BENTWOOD BOX TEMPLATE



## DIRECTIONS

1. Decorate you box!
2. Cut out box template along the solid black lines.
3. Fold along the dotted lines outward, away from each other.
4. Use glue on the exterior of all three tabs on the base of the box. Be careful not to use too much!
5. Fold the sides of the box until they are connected to the glue tabs. Hold until firm.
6. Enjoy!