



Armando Pavone, Mayor

This Week from the Mayor

including COVID-19 updates



Friday, July 31, 2020 / Issue: 55

[Click to learn more...](#)

In my weekly newsletter, I cover all that is happening in Renton, including the most current COVID-19 updates and information from state and federal officials and agencies.

Google Translation available on the website. For additional translation services contact communications@rentonwa.gov.



The city's census volunteers used community COVID-19 support efforts to help Renton residents complete their census forms.

2020 Census return rate tops 70%

Congratulations! Our 2020 Census return rate sits at 70.1%, the best among our neighboring South King County cities and fourth in the state for cities with at least 100,000 residents. The rate is 2.9% higher than in 2010, also tops in South King County.

By returning your 2020 Census, you have made a substantial investment in our city's future, and I thank you.

Topping 70% results from hard work by city staff and a dedicated team of community volunteers. It also took developing a plan that obtained and then allocated resources where they were most needed.

But like most plans, there were roadblocks, the most significant being COVID-19. When the pandemic hit with full force, we shifted from large and small community meetings to one-to-one meetings or used available technology. These volunteers, who comprised the Renton Complete Count Committee and Renton's Census Ambassadors, would not be deterred. They put on drive-through events, providing free meals to those affected by COVID-19 along with census information. They organized food drives and student art contests. They took part in online meetings and religious services to talk about the importance of responding to the census. It was a dynamic and effective campaign under the most unusual of circumstances.

They're not done. The Complete Count Committee met yesterday to develop plans to reach those sections of the city that are undercounted. I can't wait to see what they have in store.

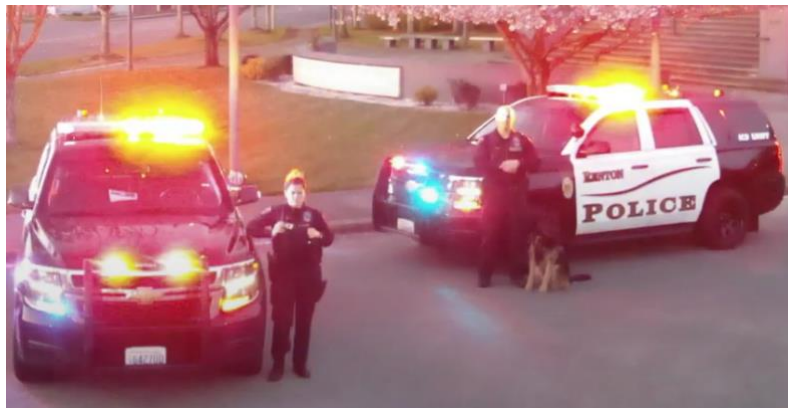
It's not too late to send in your [census response, either online or through the mail](#). Earlier this month, census takers started going door-to-door to those Renton households who have not yet responded. If one comes to your dwelling, please give them your cooperation.

These census takers are Renton residents, trained in all COVID-19 guidelines, and authorized by the federal government to conduct these interviews. They're allowed access to all properties, including apartments and rentals, under [Title 13](#) (Sections 141 & 223).

If you have questions about census takers, please contact the regional census center in Los Angeles, which covers Washington, at 213-314-6500 and speak with a Census Bureau representative.

With our committees' combined efforts and the census takers' work, I know that 70% is just a plateau, and our response rate will continue to increase.

Police launch community survey



Members of our Renton Police Department have always done a fantastic job connecting with and listening to our community. Today, their efforts have never been more critical.

As part of their efforts to engage and measure law enforcement needs and expectations, they have [launched a survey](#) about policies, practices and procedures.

The survey asks respondents to rank 14 topics from one (least important) to five (most important). Topics include the use of cameras, use of force, bias training and officer-involved shootings.

I hope you will take a couple of minutes to take the survey. The results will tell the department what you are thinking and help them direct resources and time. The survey launched today and will expire on August 12.

Zev Remembered



On Monday, Renton Police Department officers and staff paid tribute to K9 Zev, who passed away July 4. Officer Dave Adam, Zev's partner, was presented the United States flag that was flown above city hall for five minutes, one minute for each of Zev's five years of service to Renton's residents.

Parade of Positivity



Staff from Community Service's Recreation Division decorated nine vehicles and spent part of Thursday afternoon visiting residents in three of Renton's 55+ developments, Leisure Estates, Solstice Estates and Vantage Glen. In addition to letting the residents know how much they were missed at city functions, they also passed out masks and cheesecake.

Update on impact of COVID-19

New/updated information is in red

City Hall

- City Hall is closed to the public until further notice. Most services are available via telephone and [online](#).
- CDC guidelines for screening employees have been implemented. Health screening questions will be asked.
- Increased frequency for disinfecting common spaces, counters and door handles in all facilities throughout our hours of operation.
- Created [COVID-19](#) page with links to information and prevention.
- Enacted a telework policy for eligible employees until further notice.
- [Prohibition on enforcement](#) of city noise restrictions on vehicles.
- Passport service is suspended until Phase 4 of the governor's state reopening plan.
 - [Seattle Passport Agency](#)
- COVID-19 link added to [Renton Responds](#) app.
- Our HR department is adapting to changes and we are making decisions to be responsive to COVID-19 and making sure we keep our employees safe and healthy as we continue to serve our customers.
- Mayor's [Emergency Order #2020-3](#): supporting state moratorium on residential evictions for non-payment of rent.
- Don't forget to complete your [2020 Census](#).
- Mayors urge residents [to follow best practices](#).

Releases

- [July 17](#) - City passes emergency ordinance making it easier for small businesses to sell goods and advertise
- [July 1](#) - City to begin distribution of 20,000 masks free to residents
- [July 1](#) - City makes almost \$1.4 million available to Renton small businesses by COVID-19. Apply online for CARES Act funding by July 30.
- [June 30](#) - City issues Finding of City Code Violations to King County's Renton Red Lion Inn De-Intensification Shelter
- [April 17](#) - Renton increases support to small businesses
- [April 16](#) - City of Renton, King County: Renton ideal location for COVID-19 vaccine manufacturing facility
- [April 1](#) - City launches senior resources survey.
- [March 30](#) - Mayor's letter of support to Renton businesses detailing available resources.
- [March 24](#) - City's response to governor's order of "Stay Home, Stay Healthy"
- [March 23](#) - Mayor's COVID-19 update to the city council committee of the whole.

City Council

Councilmembers will be attending their meetings remotely. Due to security concerns, the video-conference identification number is not being shared publicly.

City Hall is closed, so in-person comments will not be accepted; however, Renton residents are encouraged to participate in a variety of ways.

Viewing the Meeting

- Renton TV Channel 21
- [Streaming](#)
- Telephone: 425-430-7171 and entering code 0033665#
- Zoom: <https://us02web.zoom.us/j/88216438260>

Providing Public Comment

- [Instructions for Virtual Attendance](#)
- [Next meeting](#) - Monday, August 3
 - City Council, 7 p.m.
 - Committee of the Whole, 5:30 p.m.
- [Council meeting video](#)

Donations/Volunteering

- Puget Sound Blood Bank is short on supplies. Find a [donation event](#).
- American Red Cross [Blood Drives](#).
- Those wishing to volunteer can register with [United Way](#).
- [King County Regional Donations Connector](#) is a virtual donation management center.
- Monetary contributions can be made via the Seattle Foundation's [COVID-19 Response Fund](#).
- Doug Baldwin has organized food deliveries through [familyfirstrenton.org](#) and can use volunteer help.
- Renton Regional Community Foundation has launched a [COVID-19 Response Fund](#).
- Communities In School Renton-Tukwila [COVID-19 Emergency Fund](#).
- [Emergency Feeding Program](#).

Economic Development

Small Business Relief Grant Program

We're making almost \$1.4 million available to help Renton small businesses impacted by COVID-19 through CARES Act funding. These businesses are vital to our community and need our help, and CARES funds will have an immediate impact.

If your business meets these requirements, you could get up to \$15,000:

- Have a Renton business license and are a for-profit business, not a franchise or national chain
- Have a physical location within Renton with a public-facing store front
- Have 25 or fewer employees (including the owner)
- Have been in operation in the City of Renton for at least two (2) years
- Have experienced a revenue loss due to COVID-19 related business closures

[Applications are online](#) and must be submitted by 5 p.m. on Thursday, July 30.

Our economic development division is ready to help with your application—call (206) 503-1742 or email thrive@rentonwa.gov. Requests for assistance in multiple languages can be made via [email](#).

- [July 17](#) - City passes emergency ordinance making it easier for small businesses to sell goods and advertise
- CED has compiled a list of resources for [businesses and employers](#)
- [Go Renton](#): Renton Chamber of Commerce
- State resources: [coronavirus.wa.gov](#).
- [Small Business Administration](#) is offering a disaster loan assistance to small businesses impacted by COVID-19.
- [King County Council](#) collected information on unemployment, workers' comp, rent/mortgage, utilities, student loans, food assistance, insurance & businesses.
- [March 30](#) - Mayor's letter of support to Renton businesses detailing available resources.
- [April 5](#) - Boeing extends temporary suspension of Puget Sound production operations.
- [April 7](#) - Working Washington Small Business Emergency Grant to assist small businesses (1-10 employees including proprietor). The grant program will provide a limited number of businesses with emergency funds of up to \$10,000. (note: as of April 15, applications no longer accepted)
- [The Plate Fund](#) - One-time \$500 payment to restaurant workers in King County.
- **Small Business Hotline** - If you're a Renton small business owner who needs assistance, please contact the city's Economic Development staff through the Small Business Hotline at (206) 503-1742 or by emailing thrive@rentonwa.gov.
- **Facebook Discussion** - It's more important than ever that we share resources and information in real-time. [Join the discussion](#) and follow [@RentonBusiness](#) for more updates and opportunities. This group is a networking platform for Renton's small business owners and is meant to be a safe space where business leaders can support each other and help the community thrive again.
- **Renton Business Minute** - Take a Renton Minute to get to know the small business community. We will post short interviews with local business owners and entrepreneurs on the [Visit Renton YouTube channel](#). Hear first-hand why they chose Renton! [Email us](#) to schedule your interview to be featured in the next Renton Minute.
- Local lenders eligible to issue loans under PPP - To find a Paycheck Protection Program lender, the SBA recommends contacting your

current bank or lender to see if they are offering PPP. New banks are coming on board every day. The [SBA](#) has lenders listed by zip code.

- [April 17](#) - Renton increases support to small businesses through an expanded partnership with Startup 425.
 - [Technical assistance](#)
- [U.S. Chamber of Commerce](#): Save Small Business Fund
- [Small Business Administration](#)
 - Funding: [SBA 7\(a\)](#), [504 and microloans](#), which offer [debt relief](#); or, [SBA Express Bridge Loans](#)
 - [Advising](#): The SBA Resource Partner Network for business resiliency readiness advising and training.
 - [Tax Relief](#): IRS tax relief for businesses
- [April 27](#) - The Small Business Administration (SBA) began accepting applications on April 27 for additional funding through the [Paycheck Protection Program](#). Renton's [Business Response Team](#) through Startup 425 can help with free, personal assistance, available in [multiple languages](#).
- **What's Open Eastside** - A new, no-cost map will allow businesses to show current conditions and operations to customers in Renton and beyond. [Enter hours, virtual offerings, curbside or delivery options and contact information](#) by May 21 to be included in the launch on May 25.
- **Visit Renton Listings** - List your business on [visitrentonwa.com](#) and added to the [Visit Renton app](#). Complete this [form](#) or contact [thrive@rentonwa.gov](#).
- **COVID-19 Business Impact Survey** - If your business has experienced effects as a result of COVID-19, we strongly encourage you to take this [regional survey](#). The survey's findings are critical as we develop additional business response and support programming.
- **Get Help for Your Business** - If you need assistance filing for economic relief programs, are not sure what COVID-19 means for the future of your business, or just need to talk through the current situation with a professional, the city's [Business Response Team](#) can help.
- [Renton Municipal Arts Commission](#) is accepting applications for grants for art projects that serve the general public.
- Renton Business Resources for Modified Phase 2

What does Phase 2?

- [Businesses and activities](#) now permitted in King County

If you have any questions about how you or your business fits into all of this Contact Renton's Economic Development Division at (206) 503-1742 or [thrive@rentonwa.gov](#).

Get your Free Open for Business Banner

Let your customers know you are back with a free "Open for Business" banner to hang in front of your store. Choose between "Open for Business" or "Open for Pickup" to communicate your operations. Banners are 8 feet x 3 feet and can be hung under your eaves, on a fence or in a window. There are no permits or fees required to hang these banners.

If you would like a banner, [please let us know](#) and we can coordinate a contactless banner delivery or drop-off.

Don't Leave Money On the Table!

More \$130 billion is still available in [Paycheck Protection Program](#) funding. [Recent legislation](#) provides added flexibility, such as the extension of time to spend loan funds from 8 to 24 weeks and the expansion in the percentage of funds that can be used for non-payroll expenses. The last date a PPP loan can be approved is August 8. Get your application in today! [Find a PP lender](#).

The [Business Response Team](#) at Startup425 provides free, one-on-one assistance to businesses and nonprofits in Renton. Reach out today. Someone will respond within 24 hours. Support is available in multiple languages.

Main Street Lending Program *Update*

The Federal Reserve Board announced an expansion of its [Main Street Lending Program](#) (MSLP) to allow more small- and medium-sized businesses to receive support. The board lowered the minimum loan amount, raised the maximum loan limit, adjusted the principal repayment schedule to begin after two years, and extended the term to five years.

The Renton Municipal Arts Commission offers grants to individuals, organizations and community groups for arts and culture projects and events that serve the general public in Renton. Grants from \$1,000-\$10,000 are available to fund your innovative projects that fill cultural gaps and inspire new forms of creative participation, particularly for underserved groups. The deadline is rolling, so [apply today!](#)

Update your Listing!

[What's Open Eastside](#) is a free opportunity from Startup 425 for businesses to share their services and provide status updates on delivery. This no-cost map allows you to communicate your current business conditions and operations to customers in Renton and beyond.

Startup 425 also provides free, one-on-one assistance to businesses and nonprofits in Renton for applications to the Paycheck Protection Program. If you haven't applied the deadline is June 30. Funds are available, and recent updates to the program give you more flexibility in using the money. If you need support in applying, our Business Response Team. [Reach out](#) today and you'll receive a response within 24 hours. Support is available in multiple languages.

Events

Scheduled

- [June 9 thru September 29](#): Renton Farmers Market every Tuesday, 3-7 p.m.
- [August 4](#): Tuesday Night Trivia
- [August 11-27](#): Renton Summer Games

Facilities/Services

- The following facilities are closed until further notice: Renton Community Center, Renton Senior Activity Center, Highlands Community Center, North Highlands Community Center, Renton History Museum, Renton Pavilion Event Center and Carco Theatre.
- Public Works, Parks and Facilities shops are closed to the public until further notice.
- The lunch program continues at the [Senior Activity Center](#). Seniors (60+) can grab through weekdays and pick up a sack from 11:30 a.m. to 12:30 p.m. or until lunches are gone.

Food Banks/Resources

- City of Renton [Human Services Resources Guide](#)
- [Salvation Army Food Bank](#) (206 S. Tobin St., Renton 425-255-5969) Monday, Tuesday, Thursday, Friday 9-11:30 a.m. and 1-3:30 p.m. Closed Wednesday. New clients should bring the following on their first visit:
 1. Photo identification for a person applying and for all members over the age of 18 living in their home (copies or a picture of household member ID OK);
 2. Proof of address for all members 18 years of age living in the household.
 3. Birth certificate or other legal guardianship paperwork for all minors living in the household.
- [Renton Community Meals](#) (Salvation Army, 720 S. Tobin St.) Monday-Thursday, 5:30-6:30 p.m.
- [Renton Community Meals](#) (Salvation Army 300 Rainier Ave. N.) on Friday, Saturday, and Sunday 5:30 p.m. Monday-Friday, 8-10 a.m.
- Starting July 6, [Sustainable Renton Free Grocery Store](#) is now located at St. Matthew's Lutheran Church, 1700 Edmonds Ave NE, Renton 98056), Mondays, 5:30-7 p.m.
- [Margie Williams Helping Hands Center](#) (973 Chelan Ave. NE) Saturdays, 8-11 a.m.
- [211.org](#): an access point for homeless shelters, food and other related resources.
- REACH [Center of Hope and Meal coalition](#).
- Doug Baldwin has organized food deliveries through [familyfirstrenton.org](#).
- Renton Regional Community Foundation has launched a [COVID-19 Response Fund](#).
- [South King County Food Fighters](#).
- [Seattle-area emergency food resources map](#)

- Donations to [WA Food Fund](#) provide financial assistance to three organizations that supply every food bank in Washington: Second Harvest, Food Lifeline and Northwest Harvest. Donations will fund food, materials, and personal protective equipment, as well as delivery and distribution.
- [King County](#) - Emergency food access resources.
- [Renton School District](#) has moved into its summer meal program starting June 22. Meals must be [pre-ordered](#) and picked up at [designated school or community sites](#).
- [WIC](#) - is a supplemental food program for women who are pregnant or breastfeeding, infants and children. WIC also provides health screening, nutrition and health education, breastfeeding promotion and support, help to get other services and monthly benefits for nutritious foods.
- United Way of King County is providing [free food boxes](#) to South King County community members who have been affected by COVID-19. [Sign up](#).

Health Care/Mental Health Resources

Health Care

- Valley Medical Center has a [COVID-19 page](#) with updates.
- [HealthPoint](#) in Renton.
- Public Health's [Community Health Access Program](#) for those without a doctor. Call 1-800-756-5437 or CHAP@kingcounty.gov for a free consultation and connection to free or low-cost medical providers and low-cost health insurance.
- [WIC](#) - WIC is a supplemental food program for women who are pregnant or breastfeeding, infants and children. WIC also provides health screening, nutrition and health education, breastfeeding promotion and support, help to get other services and monthly benefits for nutritious foods.

Mental Health

- CDC: [Managing Anxiety and Stress during COVID-19](#)
- CDC: [Coping with a Disaster or Traumatic Event](#)
- SAMHSA: [Taking Care of Your Behavioral Health](#)
- King County: [Crisis Connections](#)
- Wash DoH: [Social Distancing and Mental Health](#)
- Seattle Times: [Community Support Resources](#)
- Medicare Advantage: [Tips for how seniors can stay healthy and connected during the COVID-19 pandemic](#)

Additionally, there are also several recommended things you can do to support yourself:

- Take breaks from watching, reading, or listening to news stories, including social media. Hearing about the pandemic repeatedly can be upsetting.
- Take care of your body. Take deep breaths and stretch, eat healthy meals, exercise regularly, get plenty of sleep, and avoid excessive alcohol and drugs.
- Make time to unwind. Try to do some other activities you enjoy.
- Connect with others. Talk with people you trust about your concerns and how you are feeling.

Housing

- [United Way of King County](#) - Rent help for King County residents.

Inspections - Building and Development Engineering

Community and Economic Development Department (CED) continues to update homeowners and contractors regarding how the city is implementing the construction-related provisions of Gov. Inslee's COVID-19 construction restart plan and related guidance issued by the governor's office.

Upon approval for King County jurisdictions to move to Phase 2 of the Governor's "Safe Start" plan, CED hopes to perform physical onsite and virtual inspections for all construction projects under the [Governor's Phase 2 construction COVID-19 job site requirements](#) effective as of May 15, 2020. Whenever possible, virtual inspections will be accomplished. If you are interested in more information about virtual inspections, please contact the Building Division: 425-430-7200.

The phase 2 construction COVID-19 job site requirements permit all construction activity to proceed, whether previously authorized, newly authorized, existing, or not existing. In effect, new construction is no longer limited to construction that was previously authorized under Proclamation 20-25.

Under phase 2, all construction, including those activities for which social distancing may not be maintained, and the start of new construction projects, is authorized to resume. Adherence to the health and safety points in the phase 2 job site requirements will be strictly enforced. Under the phase 2 requirements, any paused and existing construction activity, may resume/continue immediately if:

- The employers and employees can meet and maintain all requirements listed in Phase 2 – construction COVID-19 Job Site Requirements document; and
- The employers and employees conduct only those activities that are allowed under their county's phase status.

The safety plan was developed as part of a working group that included contractors and workers. The plan includes requirements related to safety training, physical distancing, PPE, sanitation and cleanliness and monitoring employees for symptoms.

Before calling for an inspection, please be sure you have met the minimum requirements necessary for an onsite inspection:

1. COVID-19 Site Supervisor

A site-specific COVID-19 Supervisor shall be designated by the contractor at every job site to monitor the health of employees and enforce the COVID-19 job site safety plan. A designated COVID-19 Supervisor must be present at all times during construction activities.

Exception: single-family residential job sites with 6 or fewer people on the site.

2. Posting of COVID-19 exposure control, mitigation and recovery plan available on job site

Before commencing work, all contractors are required to develop for each job site a comprehensive COVID-19 exposure control, mitigation, and recovery plan. The plan must include policies regarding the following control measures: PPE utilization; on-site social distancing; hygiene; sanitation; symptom monitoring; incident reporting; site decontamination procedures; COVID-19 safety training; exposure-response procedures; and a post-exposure incident project-wide recovery plan. The plan must also include a Job Hazard Analysis (JHA), including a list of engineering controls and proper Personal Protective Equipment (PPE), for all job site activities defined by Washington State Department of Labor & Industries (L&I) as medium and high transmission risk.

No job site may operate until the contractor can meet and maintain all requirements of the Phase 2 Construction COVID-19 Job Site Requirements, including providing materials, schedules and equipment required to comply.

These COVID-19 job site safety practices are required as long as the "Stay Home, Stay Healthy" [Gubernatorial Proclamation 20-25](#) is in effect or if adopted as rules by a federal, state or local regulatory agency. All issues regarding worker safety and health are subject to enforcement action under L&I's Division of Occupational Safety and Health (DOSH).

- Employers can request COVID-19 prevention advice and help from [L&I's Division of Occupational Safety and Health](#) (DOSH)
- Employee Workplace safety and health complaints may be submitted to the L&I DOSH Safety Call Center: (1-800-423-7233) or via e-mail to adag235@lni.wa.gov
- General questions about how to comply with the agreement practices can be submitted to the state's [Business Response Center](#)
- All other violations related to Proclamation 20-25 can be [submitted online](#)

Online Payments

- Business licenses, pet licenses, courts, tax and licensing and utility bills can all be paid [online](#).
- Business Licensing & Tax: 425-430-6851; filelocal-wa.gov.

Pets

- [RASKC](#) - Regional Animal Services of King County
- [RASKC](#) - Pet assistance program
- [CDC](#) - Your pets and COVID-19

Permitting

- The [permit counter](#) is closed to the public until further notice. Applicants can use [online options](#) for payments and tracking applications.
- [Fees and permitting](#) waived for A-frame business signs advertising curbside pick-up.

- Permitting (General information): 425-430-7200.
- Schedule an Inspection: [Permitting Portal](#); Building: 425-430-7202; Civil/Site: 425-430-7203.

Public Works

- The maintenance facility is closed to the public until further notice.
- The Public Works Maintenance Services Division and Transportation Maintenance teams are on their regular split work schedule of 10-hour days Monday – Friday.
- To request service or report a problem call 425-430-7400 Monday - Fridays between 7 a.m. and 4:30 p.m. After normal business hours, call Renton Police Department dispatch at 425-430-7500 (option #8) to request assistance from an on-call representative. If the problem is an emergency, please call 911.
- 20 MPH flashing school zone beacons are disabled.
- Residents can also report issues via the [Renton Responds](#) app.
- Continuity of operations measures initiated to isolate water treatment operators from other employees during work.

Recreation

Safe Start [Phase 2](#): In both parks and on trails, the public is required to follow recommended COVID-19 protocols for [social distancing](#), GATHERINGS of 5 people or less, face coverings and proper hand washing.

- [June 29](#) - City reopens sports courts and play areas in parks
- Coulon Park to have [reduced hours and access on July 4](#)

Open

- All parks except Meadow Crest Playground.
- All [trails](#) except one section of the [Cedar River Trail](#).
- The boat launch at Gene Coulon Memorial Beach Park. Day permits can be purchased at the launch.
- Limited, outdoor-based summer programming is available for [registration](#)
- Park restrooms, except at Jones Park, open during park hours.
- Sports fields are available for rentals and use for groups of 5 or less, per [Phase 2](#) guidelines.
- Swim beaches at Gene Coulon Park and Kenndale Beach Park. WARNING - Lifeguards will not be on duty! Swim at your own risk - children should be accompanied by an adult at all times; adults should not swim alone.
- [Virtual and neighborhood-based programming](#) is underway.

Closed

- All building rentals and community events are canceled through August 31.
- Henry Moses Aquatic Center all summer.
- Park restrooms at Jones Park.
- Picnic shelters will remain closed through 2020.

Renton is ideal location for COVID-19 vaccine facility

[April 16](#) - City of Renton, King County: Renton ideal location for COVID-19 vaccine manufacturing facility

- [KIRO 7](#) - Renton considers recruiting coronavirus vaccine manufacturer
- [KING 5](#) - Renton mayor says the city is “ideal” location for COVID-19 facility
- [Patch.com](#) - Renton ideal location for coronavirus vaccine manufacturing facility
- [Seattle Medium](#) - Renton considered an ideal location for COVID-19 vaccine manufacturing facility
- [425 Business](#) - Renton hopes to repurpose industrial assets for COVID-19 vaccine production
- [Bisnow](#) - Seattle suburb looks to become vaccine epicenter
- [KCPQ-TV](#) - Renton looks to be center for coronavirus vaccine

Renton Municipal Airport

- Offices are closed to the public until further notice. Runway and support services are operational.
- General information is available on the [website](#) or by calling 425-430-7471 (admin) or 206-423-3715 (maintenance).

Renton Municipal Court

- The court is currently closed to the public. Staff is working both remotely and on-site with adherence to social distancing and other health guidelines. Calls from the public are being answered daily.
- In-custody hearings are being held via video conference with parties appearing remotely.
- Out of custody hearings are now being held via Zoom and streamed on YouTube. More information can be found [online](#).
 - Renton Municipal Court is serving as a mentor court to other courts that are seeking to establish video hearings.
- Domestic violence no-contact order recall hearings are being held via Zoom in a manner that affords the necessary safety protocols for protected parties and streamed on YouTube.
- Jury service is suspended per an emergency order issued by Presiding Judge Terry L. Jurado until the city hall is opened to the public and health safety precautions have been implemented to assure the safety of all participants.
- Passport service is suspended until Phase 4 of the governor’s state reopening plan.
 - [Seattle Passport Agency](#)

Renton Police Department

- If you suspect a business is violating the governor’s “Stay Home, Stay Healthy” order, the state has an [online reporting form](#). If the report is about an individual or private group, use the police department’s non-emergency number 425-235-2121.
- Department lobby and walk-up window at city hall are closed.
- Only use 911 for emergencies; non-emergencies: 425-235-2121.
- Public Health - Seattle & King County (206-477-3977) handles complaints of crowds of 50 or more.
- School zone cameras turned off.
- File a [police report](#) online.

Updates from the Chief of Police

- [June 26](#) - "Statewide face-covering order is a public health and safety measure, it is not a mandate for law enforcement to detain, cite or arrest violators."
- [May 28](#) - "On the death of George Floyd"
- [April 17](#) - "County's use of the Red Lion Inn"
- [March 27](#) - "Our role is to help educate"
- [March 23](#) - "Stay Home, Stay Healthy"
- [March 20](#) - "The safety of our community is our top priority"
- [March 13](#) - "Updates on procedures"

Renton Regional Fire Authority

- [Procedures updated](#).

Renton School District/Education

- Renton Schools are [closed](#) for the rest of the school year. Distance-learning in effect.
- [Services are being offered](#) during their closure.
- [Closure and classroom information](#) for students and families.
- [OSPI](#): Office of the Superintendent of Public Instruction.
- [April 8](#) – Governor provides additional guidance on school closures and the impact on available services.
- Communities In School Renton-Tukwila [COVID-19 Emergency Fund](#).
- [Best Start for Kids](#): Tips for teaching your child with special learning needs.
- [Renton School District](#) provides free meals to any child, ages 1-18, in front of most schools. Meals are “grab and go” and are intended to be taken off-campus or even picked up through car windows. [Preregistration is required](#). Beginning Monday, May 11, meals will be available only on Mondays and Wednesdays from 11 a.m. – 12 p.m. at designated meal sites. Monday pick-up would include meals for Monday and Tuesday and Wednesday pick-up is for Wednesday, Thursday and Friday.
- [June 11](#) - OSPI's Reopening Washington Schools 2020: District Planning Guide
- Renton School District's [Summer Meal program](#) starts June 22. Meals must be [pre-ordered](#) and picked up at [designated school or community sites](#).
- [June 24](#) - Governor releases plan to restart higher education in the fall

- [July 22](#) - Renton schools 2020-2021 reopening plan
- [July 23](#) - Public Health - Seattle & King County supports decisions by schools to begin school year with online learning

Republic Services

- **Facial masks, gloves, and all other personal protective equipment must be disposed in the garbage. These materials do not belong in your blue recycle container.**
- [Republic Services](#) has put into effect new temporary guidelines for waste collection procedures in the interest of safety for both the public and their drivers. All recycling and organics materials must be placed in a cart or can; any loose, bundled, or bagged items outside of a cart or cannot be collected. Extra garbage must be placed in a cart, can, or secured in bags. Bulky waste collection and Clean Sweep collections are suspended until further notice. All collection routes are on a normal schedule. Questions? Contact Republic Services at 206-777-6440.
- Republic Services will waive late fees and penalties and will not activate any service suspensions for 90 days. (*March 23*)
- Businesses with solid waste accounts and operating during “Stay Home, Stay Healthy” can call Republic Services at 206-777-6440 to request necessary service changes including increased/decreased container size or frequency of service. The city's mandatory garbage code requires at least the minimum level of service (20-gallon cart) and one collection per week.
- Businesses with solid waste accounts and temporarily closed as a result of COVID-19 can contact Republic Services at 206-777-6440 to request a temporary hold on their account. No service will be provided during the temporary hold and businesses **MUST NOT** place any garbage or recyclables in their containers during the hold period, as this could result in a public health problem. All COVID-19 holds will be reinstated to normal collection schedules once the “Stay Home, Stay Healthy “ order is lifted.
- More Solid Waste below

Restaurants

- Renton restaurants open for take-out/delivery:
 - [General Renton](#)
 - [Downtown Renton](#)
 - [Google Document](#)
 - [What's Open Eastside](#) (courtesy of Startup425)
 - Gift cards are also appreciated.
 - Add your restaurant [to the list](#).
- [May 18](#) - Ivar's at Gene Coulon Memorial Beach Park will reopen on June 1 for delivery and takeout only. The hours of operation will be 11 a.m. to 7:30 p.m. seven days a week.

Shelters

Men's Shelters & Day Centers

- **ARISE**
[Catholic Community Services](#). Hosted by a different Renton church every month. Includes Case Management services.
- **Congregations for the Homeless**
 - Space is provided on a first-come, first-served basis. Overnight services from 7:30 p.m.-7:30 a.m. Men allowed on-site at 7 p.m.
 - 515B 116th Ave NE
Bellevue, WA 98004
(425) 289-4044
- **Day Center**
Resource referrals, showers, laundry, meals. Open Sunday – Thursday from 8 a.m.-3 p.m.
 - 515B 116th Ave NE Suite 174
Bellevue, WA 98004

Women's Shelters & Day Centers

- **Kent Hope**
Resource referrals, showers, laundry, meals, healthcare. Open every day from 7 a.m.-8:30 p.m.
 - 9009 Canyon Drive
Kent, WA 98030
(253) 480-2325
- **The Sophia Way**
Apply for extended stay shelter [online](#).
Resource referrals, showers, laundry, breakfast/lunch. Open every day 8 a.m.-3 p.m.
 - 3032 Bellevue Way NE
Bellevue, WA 98004
(425) 896-7385
- **Women's Referral Center**
Check-in at Angeline's Day Center between 6-9 p.m. then transported to host locations for overnight stay. The center offers showers, laundry, and dinner.
 - 2030 3rd Ave.
Seattle, WA 98101
(206) 441-3210
- **Hospitality House**
Opens at 6 p.m. every night.
 - 1419 SW 150th St
Burien, Washington 98166
(206) 242-1860

Family Shelters & Day Centers

- **REACH**
All for shelter/day center intake. Includes the Center of Hope Day Center
- **Center of Hope Day Center**
Resource referrals, showers, laundry. Open Monday – Friday 7:30 a.m.-4 p.m.
 - Highlands Community Center
800 Edmonds Ave NE
425-4390-6766
- **Mary's Place**
Call 206-245-1026 for shelter referrals.

Solid Waste

- All collection routes are on normal schedules. Questions? Contact Republic Services at 206-777-6440.
- [Bulky item](#) collection and [Clean Sweep](#) have resumed.
- Extra recyclables can be placed in containers next to curbside carts. Do not place recyclables in garbage bags or other plastic bags.
- Extra yard waste can be placed in containers next to curbside carts. Do not place yard waste in garbage bags or other plastic bags.
- Factoria, Auburn, South Seattle and North Seattle Household Hazardous Waste drop-off sites are open for essential visits only. Residents should safely store hazardous waste at home and postpone trips unless necessary. Seattle household [hazardous waste collection facilities](#) are open with reduced hours for essential trips only. South Seattle is open Friday and Saturday and North Seattle is open Sunday and Monday, 9:30 a.m. to 4:30 p.m.
- King County strongly urges residents to postpone non-essential visits to King County transfer and recycling stations. Residents with a need to dispose of essential waste should be prepared to show verification of King County residency.

Transportation

Metro

- [Metro Matters](#) blog
- [June 12](#) - Metro plans September service change amid budget challenges
- [April 17](#) - Further Metro service reductions begin Saturday, April 18, to support essential travel and transit workforce.
- [March 30](#) - Interactive tool for Metro riders whose routes experienced service cuts.
- [March 29](#) - If your Metro route was cut on March 23, are some alternative routes to consider.
- [March 18](#) - Metro plans to temporarily reduce service starting Monday, March 23 to support the health of the community.

Sound Transit

- [Sound Transit](#) news
- [March 21](#) – Sound Transit service change includes new routes, temporary service reductions.
- [March 20](#) – Sound Transit to suspend fares on all transit modes until further notice.

- [March 19](#) - Sound Transit to temporarily reduce service on Link light rail, Sounder trains, some ST Express routes.

Utilities

- The city will waive late fees and penalties and will not shut off water service in accordance with the Governor's Proclamation 20-23.4, until the termination of the COVID-19 State of Emergency or after July 28, 2020. (June 17)
- Questions? Utility Bills: 425-430-6852; rentonwa.gov/ub.
- Puget Sound Energy (PSE) will not disconnect customers for non-payment, will waive late fees and work on [payment plans](#) and [choosing a new bill due date](#). PSE has an [energy assistance portal](#) to facilitate access to funds available to income-qualified customers.
- PSE's [Crisis Affected Customer Assistance Program](#) (CACAP) is an \$11 million fund dedicated to assisting low-income customers impacted by the COVID-19 pandemic and economic shutdown. This program is in addition to PSE's other assistance programs, including the Warm Home Fund, PSE Home Energy Lifeline Program, and Weatherization Assistance Program for income-eligible customers.

King County Response

[Public Health - Seattle King County COVID-19 Dashboard](#)

- [July 20](#) - King County partners with King County Library System to distribute face coverings to community and faith-based organizations, and individuals
- King County's [Local Food Finder](#) supporting local farms. A convenient way for residents to support local farms hit hard by the COVID-19 pandemic.
- Small Business [Safe Start Kit](#)
- [June 29](#) - Small Business Assistance Program for businesses in unincorporated King County
- [June 19](#) - King County approved for Phase 2
- [June 18](#) - King County applies for Phase 2 of Safe Start recovery plan
- [June 18](#) - King County distributing 25 million face coverings to residents, workers and businesses
- [June 11](#) - King County executive submits a budget which includes funding of COVID-19 response, including purchasing of 25 million face coverings for residents
- What's allowed in "[Modified Phase 1](#)"
- [June 3](#) - King County submits plan to re-open limited business activity in COVID-19 recovery
- [May 29](#) - King County Executive announces plan to re-open limited business activity in COVID-19 recovery
- [May 28](#) - Seattle and King County recommends that anyone who has COVID-19 symptoms or close contact with someone who has COVID-19 be tested right away. Testing as soon as possible after symptoms appear is important to prevent COVID-19 from spreading to family, friends, and the community.
- [May 14](#) - Elliott Avenue modular pilot project opens to offer shelter beds and services to fight COVID-19
- [May 12](#) - King County Council approves \$60M for continued COVID-19 response
- [April 23](#) - County executive announces supplemental budget to continue COVID-19 response, help small businesses, arts and tourism; fund homeless youth programs
- [April 13](#) - King County awards \$1 million to provide language access and other COVID-19 services to frontline community groups.
- [April 22](#) - Office of Equity & Justice's COVID-19 Resource Guide
- [March 31](#) - County Council approves \$2.2 million for emergency childcare for first responders and other essential workers during the COVID-19 crisis.
- [March 30](#) - King County postpones payment deadline to June 1 for individual property taxpayers.
- [Don't flush trash](#) - Wipes, paper towels, and other unflushable items can create a sewer backup in your home. Flush only toilet paper and protect your home, the sewer system, and the environment.
- [COVID-19 Data Dashboard](#) from Public Health-Seattle & King County.
- [March 24](#) - King County releases new health and safety guidelines to childcare providers.
- [King County Regional Donations Collector](#), a virtual donation management center.
- [COVID-19 Resources](#) from King County.
- [Do's and don'ts of staying at home](#)
- [RASKC](#): Regional Animal Services of King County
- [King County Parks](#)
- [King County press releases](#)



[Click image for more information](#)

Public Health – Seattle & King County

- [COVID-19 Dashboard](#) with daily case summary
- [COVID-19 resources](#). Information in multiple languages.
- [Free COVID-19 testing locations](#) in King County
- [Public Health Insider](#): official insights from staff
- [COVID-19 Fact Sheets](#) (translations)
- [Educational videos](#): COVID-19 information in multiple languages
- [WIC](#) - WIC is a supplemental food program for women who are pregnant or breastfeeding, infants and children. WIC also provides health screening, nutrition and health education, breastfeeding promotion and support, help to get other services and monthly benefits for nutritious foods.
- [May 1](#) - New analytics show pronounced racial inequities among COVID-19 cases, hospitalizations and deaths
- [May 6](#) - Tips for staying safe outdoors as more recreation lands reopen
- [May 8](#) - Latest report shows COVID-19 transmission rate could be rising in King County; social distancing remains key
- [May 29](#) - Taking care of mental health during COVID-19 (Public Health - Seattle & King County)
- [June 2](#) - Public Health - Seattle & King County answers questions about protests and COVID-19
- [June 3](#) - Public Health - Seattle & King County: COVID-19 and unrecognized realities experienced by Black people
- [June 4](#) - Public Health - Seattle & King County: Safe Start for King County - working to gradually reopen the local economy
- [June 12](#) - Racism is a public health crisis: The transformation starts here. It starts with us.
- [June 19](#) - The virus hasn't let up and we can't either (Public Health - Seattle & King County)
- [June 25](#) - Prevention is the key for containing COVID-19 (Public Health - Seattle & King County)
- [June 26](#) - What to do if an employee has COVID-19 – and what not to do (Public Health - Seattle & King County)



Wear a face covering and keep 6 feet apart from others in public spaces.



For more information kingcounty.gov/masks

Public Health
Seattle & King County

[Click image for larger view](#)

King County Mask Directive

- [May 11](#) - Starting on May 18, 2020, King County residents are directed to wear face coverings in most public settings.
- [May 12](#) - What you need to know about King County's health directive on face coverings
- [The Do's and Don'ts of wearing cloth face coverings](#)

State of Washington Response

cononavirus.wa.gov – one-stop great resource for state response

- [Filing for unemployment benefits](#)
- [Health insurance](#): Washington Health Plan finder
- [March 30](#) - Department of Licensing is temporarily closing all driver licensing lobbies on March 31.
- [March 30](#) – The state has set up an [online form](#) to report non-essential businesses that violate the governor's Stay Home-Stay Health order.

- [April 7](#) - Working Washington Small Business Emergency Grant program to assist small businesses (1-10 employees including proprietor). The grant program will provide a limited number of businesses with emergency funds of up to \$10,000.
- [May 19](#) - Dept. of Commerce awards first 500 Working Washington small business relief grants
- [June 8](#) - Beginning June 8, the governor's "Safe Start Washington" plan to reopen the economy requires all employees to wear a cloth facial covering, with the following exceptions
- [June 11](#) - OSPI's Reopening Washington Schools 2020: District Planning Guide

State Department of Health

- [COVID-19 outbreak information](#)
- [DOH](#) - Guidance on cloth face coverings
- [DOH](#): When to use the emergency room
- [DOH](#) - COVID-19 and people with disabilities
- [DOH](#) - Misinformation about COVID-19 can create fear and make it harder to keep everyone healthy.
- [May 27](#) - You are not alone; dealing with isolation
- [June 14](#) - DOH reports an increase in the spread of COVID-19
- [June 23](#) - The Science of Masks (*Washington State DOH*)
- [June 24](#) - Myths and Facts about Cloth Face Coverings (*Washington State DOH*)
- [June 25](#) - Cloth Face Coverings: Frequently Asked Questions (*Washington State DOH*)
- [June 26](#) - Increasing cases of COVID-19 in King County highlight the need to limit close contact (*Washington State DOH*)
- [July 22](#) - COVID-19 is on a path to runaway growth in Washington state (*State DOH*)
- [July 24](#) - **Hot weather tips during a pandemic (Public Health-Seattle & King County)**
- [July 28](#) - **Washington State Department of Health launches CORONA Survey**

Governor's Actions

- [July 30](#) - **Governor issues contact tracing proclamation, protects personal information**
- [July 28](#) - **Governor presses "pause" in phased re-opening**
- [July 24](#) - **Governor extends moratorium on evictions through Oct. 15**
- [July 23](#) - **Governor announces rollbacks to some activities to slow COVID-19 exposure**
 - [Guidance for restaurants, taverns, breweries, wineries, etc.](#)
- [July 16](#) - Governor announces steps to address COVID-19 spread
- [July 7](#) - Governor extends Safe Start proclamation, issues facial coverings guidance
- [June 24](#) - Governor releases plan to restart higher education in the fall
- [June 23](#) - Governor announces statewide mask mandate
- [June 17](#) - Governor announces cancellation of some state employee raises and need for furloughs
- [June 2](#) - Governor extends eviction moratorium
- [May 13](#) - Governor issues directive to state agencies to freeze hiring and contracts
- [May 12](#) - Governor announces contact tracing initiative
- [May 8](#) - Governor releases additional Safe Start Phase 1 guidance
- [May 5](#) - Governor announces three Safe Start advisory groups
- [May 4](#) - Governor signs new COVID-19 order for phased re-opening of Washington's economy
 - [Proclamation](#)
 - [Review the Phases](#)
- [May 1](#) - Governor announces four-phase plan to gradually reopen the state's economy
- [April 29](#) - Governor rolls out COVID-19 risk assessment dashboard with data
 - [Data visualization](#)
- [April 29](#) - Governor issues guidance to clarify limits on elective surgeries
- [April 27](#) - Governor announces Colorado & Nevada will join Washington, Oregon & California in Western States Pact
- [April 27](#) - Governor announces distribution of funding to local governments from the federal stimulus package
- [April 27](#) - Governor announces easing of outdoor restrictions
- [April 24](#) - Governor announces plan to allow construction projects previously underway to be completed
 - [Information for Business & Workers](#)
 - [April 29](#) - Additional guidance from the governor
- [April 23](#) - Governor extends 20 proclamations relating to COVID-19
- [April 21](#) - Governor announces Washington's COVID-19 recovery plan
- [April 21](#) - Governor sends letter to vice president calling for strong national testing system
- [April 21](#) - Governor extends proclamations for utility ratepayers and truck driver hours
- [April 16](#) - Governor expands eviction moratorium and adds additional protections for residential and some commercial tenants.
- [April 13](#) - Governor issues protection for high-risk workers.
- [April 13](#) - Washington, Oregon and California announce Western States Pact.
- [April 13](#) - Governor announces strategies for reducing the number of individuals incarcerated to address COVID-19 in the DOC system.
- [April 8](#) - Governor's statement on Century Link field hospital redeployment.
- [April 8](#) - Governor provides additional guidance on school closures and the impact on available services.
- [April 1](#) - The state is seeking to fill shortages of specific personal protective equipment (PPE) and infection-control products to support our medical system, first responders, public health and care facilities.
- [April 1](#) - The governor issues additional guidance on the "Stay Home, Stay Healthy" order related to essential businesses. It clarifies as "essential" nannies (who are deemed essential if they are in the home taking care of children of essential workers), automotive repair facilities and limited automotive sales and leasing activities, and renewable energies. The bulletin also includes guidance that recreational fishing and golf are NOT deemed essential.
- [March 31](#) - The governor and Washington State Department of Financial Institutions announce assistance for homeowners unable to make mortgage payments.
- [March 27](#) - The governor welcomes Army doctors to a field hospital in Seattle.
- [March 23](#) - The governor announced a stay at home order, banning all gatherings and closing all but those businesses [classified by the federal guidelines](#) as essential. The ban will take effect on March 25 and be in place for a minimum of two weeks. The governor indicated that even though the order is voluntary, it is enforceable by law. Residents will be able to conduct essential business (shopping, doctor's appointments) and restaurants can still conduct business via to-go and delivery orders.
- [March 19](#) - The governor orders a halt to elective surgeries and dental services to reserve critical equipment for COVID-19 health care workers.
- [March 18](#) - The governor waives the one-week wait for unemployment benefits.
- [March 17](#) - The governor signs bill package to support state effort combating the COVID-19 outbreak.
- [March 16](#) - The governor expands statewide shutdown of restaurants, bars and limits on the size of gatherings.
- [March 13](#) - The governor expands school closure/gathering ban statewide.
- The governor's [press releases](#).

Safe Start - Washington's Phased Approach

- [July 7](#) - Governor extends Safe Start proclamation, issues facial coverings guidance
- [June 22](#) - What's open in each phase
- [May 29](#) - Governor issues Safe Start-Washington's Phased Reopening plan

WASHINGTON'S PHASED APPROACH Modifying Physical Distancing Measures				
INDIVIDUALS AND BUSINESSES SHOULD FOLLOW ALL REQUIREMENTS LISTED ABOVE DURING ALL PHASES				
	1 Phase 1	2 Phase 2	3 Phase 3	4 Phase 4
High-Risk Populations*	Stay home unless engaging in Phase 1 permissible activities.	Strongly encouraged, but not required, to stay home unless engaging in Phase 1 or Phase 2 permissible activities.	Strongly encouraged, but not required, to stay home unless engaging in Phase 1, 2, or 3 permissible activities.	Resume public interactions, with physical distancing
Recreation	Some outdoor recreation (hunting, fishing, golf, boating, hiking)	Outdoor recreation involving 5 or fewer people outside your household (camping, beaches, etc.)	Outdoor group rec. sports activities (50 or fewer people) Recreational facilities at <50% capacity (gyms, public pools, etc.)	Resume all recreational activity
Gatherings (non-religious)	No gatherings	Gather with no more than 5 people outside your household per week	Allow gatherings with no more than 50 people	Allow gatherings with >50 people
Travel	Essential travel and limited non-essential travel for Phase 1 permissible activities	Essential travel and limited non-essential travel for Phase 1 & 2 permissible activities	Resume non-essential travel	Continue non-essential travel
Business/Employers	<ul style="list-style-type: none"> Essential businesses open Existing construction that meets agreed upon criteria Landscaping Auto/RV/Boat/ORV sales Retail (curbside pick-up orders only) Car washes Pet walkers 	<ul style="list-style-type: none"> Remaining manufacturing Additional construction phases In-home/domestic services (nannies, housecleaning, etc.) Retail (in-store purchases allowed with restrictions) Real estate Professional services/office-based businesses (telework remains strongly encouraged) Personal services (hair and nail salons/barbers, tattoo, etc.) Pet grooming Restaurants/taverns <50% capacity, table size no larger than 5 (no bar-area seating) Limited small group fitness Drive-in Movie Theaters Library (curbside pick-up) 	<ul style="list-style-type: none"> Restaurants/taverns <75% capacity/ table size no larger than 10 Bar areas in restaurants/taverns at <25% capacity Theaters at <50% capacity Customer-facing government services (telework remains strongly encouraged) Libraries Museums All other business activities not yet listed except for nightclubs and events with greater than 50 people 	<ul style="list-style-type: none"> Nightclubs Concert venues Large sporting events Resume unrestricted staffing of worksites, but continue to practice physical distancing and good hygiene

[Click image to open a larger version](#)

(May 4) Through the Washington "Safe Start" plan, more businesses and activities would re-open in phases with adequate social distancing measures and health standards in place. Each phase will be at least three weeks — data and metrics will determine when the state can move from one phase to another.

WASHINGTON'S PHASED APPROACH Reopening Business and Modifying Physical Distancing Measures				
	1 Phase 1	2 Phase 2	3 Phase 3	4 Phase 4
High-Risk Populations*	Continue to stay home, stay healthy	Continue to stay home, stay healthy	Continue to stay home, stay healthy	Resume public interactions, with physical distancing
Recreation	Some outdoor recreation (hunting, fishing, golf, boating, hiking)	All outdoor recreation involving 5 or fewer people outside your household (camping, beaches, etc.)	Outdoor group rec. sports activities (50 or fewer people) Recreational facilities at <50% capacity (gyms, public pools, etc.)	Resume all recreational activity
Gatherings (non-religious)	No gatherings	Gather with no more than 5 people outside your household per week	Allow gatherings with no more than 50 people	Allow gatherings with >50 people
Travel	Only essential travel	Essential travel and limited non-essential travel for Phase 1 & 2 permissible activities	Resume non-essential travel	Continue non-essential travel
Business/Employers	<ul style="list-style-type: none"> Essential businesses open Existing construction that meets agreed upon criteria Landscaping Auto/RV/Boat/ORV sales Retail (curbside pick-up orders only) Car washes Pet walkers 	<ul style="list-style-type: none"> Remaining manufacturing Additional construction phases In-home/domestic services (nannies, housecleaning, etc.) Retail (in-store purchases allowed with restrictions) Real estate Professional services/office-based businesses (telework remains strongly encouraged) Personal services (hair and nail salons/barbers, tattoo, etc.) Pet grooming Restaurants/taverns <50% capacity, table size no larger than 5 (no bar-area seating) Limited small group fitness Drive-in Movie Theaters Library (curbside pick-up) 	<ul style="list-style-type: none"> Restaurants/taverns <75% capacity/ table size no larger than 10 Bar areas in restaurants/taverns at <25% capacity Theaters at <50% capacity Customer-facing government services (telework remains strongly encouraged) Libraries Museums All other business activities not yet listed except for nightclubs and events with greater than 50 people 	<ul style="list-style-type: none"> Nightclubs Concert venues Large sporting events Resume unrestricted staffing of worksites, but continue to practice physical distancing and good hygiene

[Click image to open larger version](#)

- [May 4](#) - Reopening guidance for business and workers
- [Updated](#) - [Governor's clarifying memos by phase for businesses](#)

Phase 1

(May 6) Washington state is currently in Phase 1, with construction and other essential activities underway. The additions such as outdoor activities and additional sales and retail activities begin Tuesday, May 5. When the state moves to Phase 2, all components of Phase 1 will continue.

Includes

Phase 1 builds upon recent decisions made around re-opening some activities, including construction activity (allowed as of April 29) and outdoor activities such as fishing, hunting, playing golf and some park access, which Inslee announced last week.

Also adds (as of May 5):

- Drive-in spiritual services with one household per vehicle
- Auto/RV/Boat/ORV sales
- Retail open for curbside pick-up orders only
- Car washes
- Landscaping
- Some pet services (not including grooming)
- Essential travel and limited non-essential travel to engage in Phase 1 activities are permitted.

Phase 2

When COVID-19 disease burden is low and decreasing and the four capabilities (health care system readiness; testing capacity and availability; case and contact investigations; and ability to protect high-risk populations) are met, the governor will issue an order for the state to move into Phase 2.

As noted above, each phase will be at least three weeks, data and metrics will determine when the state can move from one phase to another.

Includes

All components of Phase 1 will carry into the start of Phase 2, which will include outdoor activities in small groups with people from outside one's household, as well as limited non-essential travel within proximity of one's home.

Additional modifications to restrictions in Phase 2 affecting business will include:

- Remaining manufacturing and construction phases
- Restaurants/taverns less than 50% capacity/table size no larger than 5 people and no bar area seating
 - [May 11](#) - Dine-In Restaurant and Tavern Industry
 - [May 11](#) - Restaurant/Tavern Reopening COVID-19 Requirements
- Hair and nail salons
- Retail (in-store purchases allowed with restrictions)
- Real estate
- Professional services/office-based businesses (telework remains strongly encouraged)
- In-home/domestic services (i.e., nannies, housecleaning)
- Pet grooming
- Essential travel and limited non-essential travel to engage in Phase 1 and Phase 2 activities is permitted.

Phase 3

If COVID-19 disease burden stays low and the four capabilities (healthcare system readiness; testing capacity and availability; case; and contact investigations and ability to protect high-risk populations) are met, the governor will issue an order for the state to move into Phase 3.

Includes

All components of phases 1 and 2 will carry into the start of Phase 3, which will include resuming non-essential travel and allowing gatherings of no more than 50 people.

Phase 3 also includes resuming some public activity, such as:

- Outdoor group recreational sports activities (50 or fewer people)
- Recreational facilities at less than 50% capacity (gyms, public pools, etc.)
- Professional sports (horse racing, baseball, etc.) without audience participation
- Restaurants and taverns at less than 75% capacity with table size no larger than 10
- Bar areas in restaurants and taverns at less than 25% capacity
- Indoor gyms at less than 50% capacity; theaters at less than 50% capacity
- Customer-facing government services (telework remains strongly encouraged where possible)
- Libraries
- Museums
- All other business activities not yet listed except for nightclubs and events with no more than 50 people.

Phase 4

If COVID-19 disease burden stays low and the four capabilities (healthcare system readiness; testing capacity and availability; case and contact investigations; and ability to protect high-risk populations) are met, the governor will issue an order for the state to move into Phase 4.

Includes

All components of phases 1, 2 and 3 will carry into the start of Phase 4 which would be a full return to public interactions (with appropriate physical distancing).

Phase 4 also includes resuming some public activity, such as:

- Nightclubs
- Concert venues
- Large sporting events
- Resume unrestricted staffing of worksites, but continue to practice physical distancing and good hygiene

COVID-19 Risk assessment dashboard

The state's COVID-19 dashboard provides a high-level overview of the main data points discussed among state leaders and the level of risk experts perceive around the current numbers. It is not intended to represent the totality of all COVID-19 related data. The state is currently developing several new systems for collecting, compiling and reporting much of the data outlined below and this dashboard will link to those new systems as they are completed. In the meantime, where possible, we've linked to the data that is currently available or created a snapshot that summarizes the most recent information available. The dashboard is updated weekly on Wednesdays.

- [COVID-19 Risk assessment dashboard](#)

Federal Response

- [coronavirus.gov](#)
- [April 27](#) - The Small Business Administration (SBA) began accepting applications on April 27 for additional funding through the [Paycheck Protection Program](#). Renton's [Business Response Team](#) through Startup 425 can help with free, personal assistance, available in [multiple languages](#).
- The SBA is also offering low-interest [Economic Injury Disaster Loans](#) to small businesses who have suffered substantial economic injury as a result of the Coronavirus (COVID-19).
- [April 3](#) - CDC recommendation regarding the use of cloth face coverings, especially in areas of significant community-based transmission.
- [WHO](#) - When and how to use masks (World Health Organization)
- [March 27](#) - Congress passes CARES Act, a \$2.2 trillion federal stimulus package to aid coronavirus relief and economic stimulus.
- [March 22](#) – President approves major disaster declaration for Washington.

Important Links

- [Public Health - Seattle & King County](#)
- [King County Emergency news](#)
- [Centers for Disease Control and Prevention](#)
- [Governor's Coronavirus resources](#) (coronavirus.wa.gov)
- [Washington State Coronavirus Response:](#)
- [Coronavirus fact sheets in multi-language resources](#)
- [King County Emergency Preparedness Standards](#)
- [State Resources for Business](#)
- [Homeless Services Provider Resources](#)

Information for Businesses and Employees

For Businesses

- [Stay Home – Stay Healthy Guidance for essential business](#)
- [What do I do if an employee tests positive for COVID-19](#)
- [OSHA guidance for preparing workplaces for COVID-19](#)

For Employees

- [Employment Security Division: for workers affected by COVID-19](#)
- [ESD's Paid Family and Medical Leave Program](#)
- [SharedWork Program](#)
- [Temporary layoffs, standby and furloughs](#)
- [Layoff Assistance](#)
- [United Way of King County: Where to get help](#)

Financial Resources

- [U.S/ Small Business Administration Disaster Loan Assistance](#)
- [Keep Workers Safe and Healthy Fund \(Seattle Metro Chamber\)](#)
- [Washington State Department of Revenue: Business Relief During COVID-19 Pandemic](#)
- [IRS: Coronavirus Tax Relief](#)
- [Facebook Small Business Grants Program](#)
- [Association of Washington Businesses](#)
- [Business Washington COVID-19 Business Resources](#)
- [Restore Your Economy.org: COVID-19 Resources for Economic Development](#)