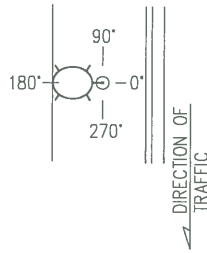


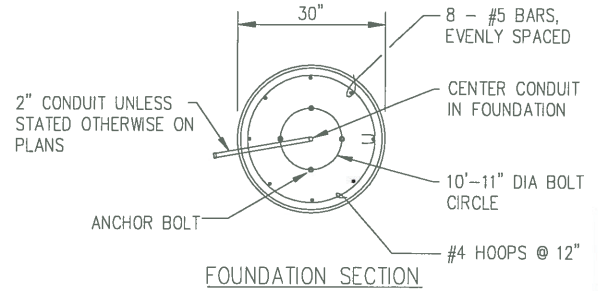
**PAINT SPECIFICATIONS:**  
 ALL ALUMINUM LUMINAIRE AND POLE RELATED PARTS SHALL BE FACTORY PRIMED AND POWDER COATED.  
 FINISH COLOR: RAL 9005TX "JET BLACK"

**DECORATIVE LUMINAIRE POLE NOTES**

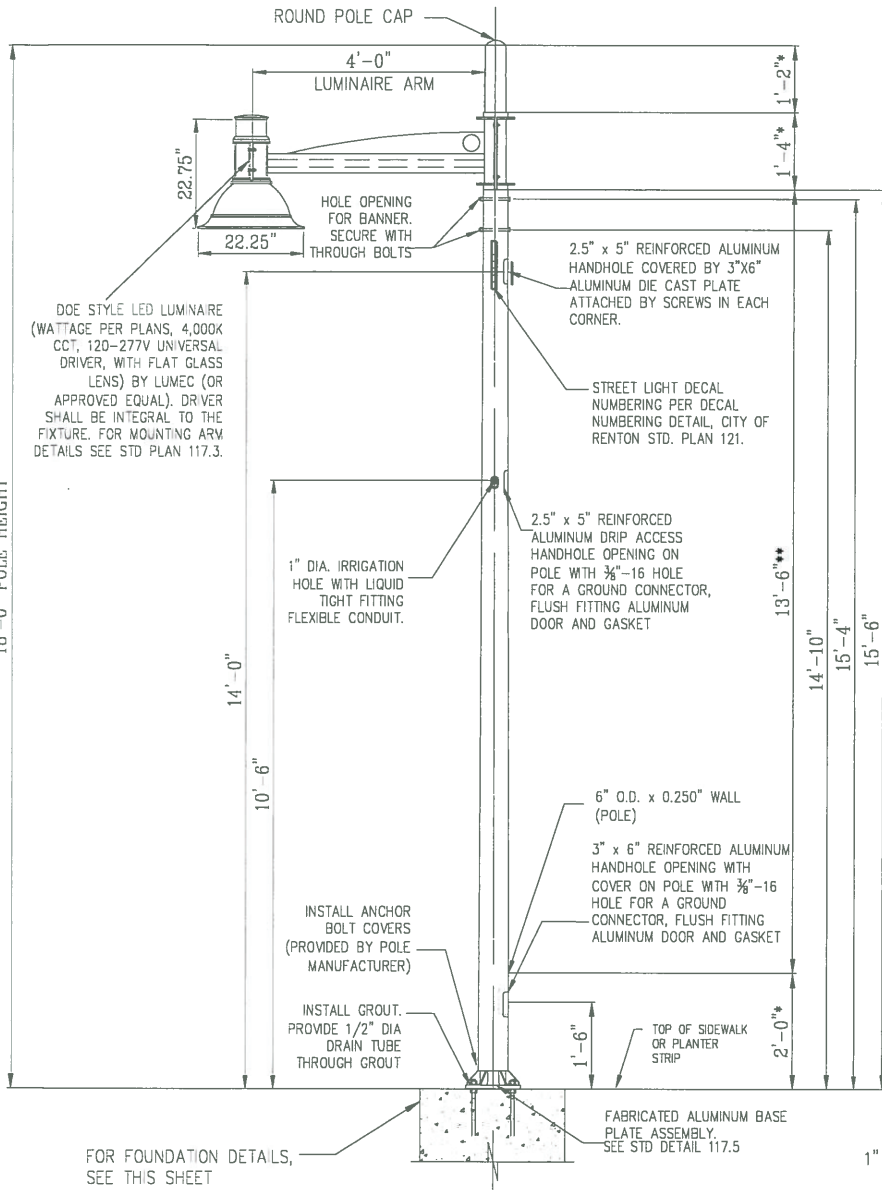
- \* ROUND TUBULAR SECTION (NO TAPER)
- \*\* ROUND TAPERED POLE SECTION (0.14"/FT)



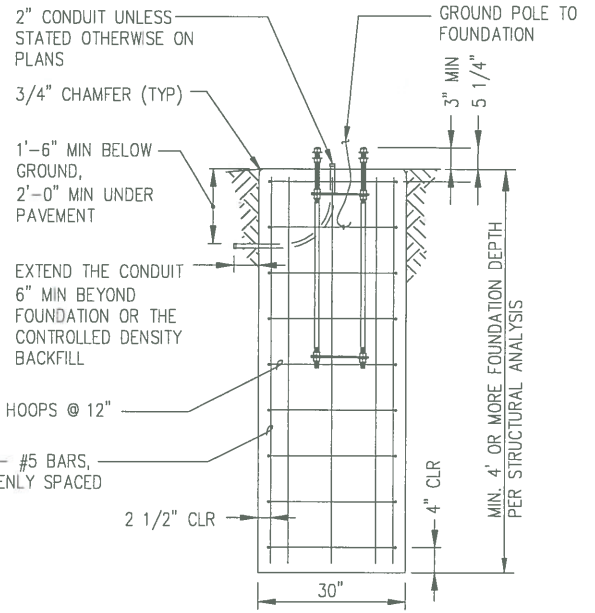
- DECORATIVE PEDESTRIAN LUMINAIRES ARE MOUNTED AT 180° (UNLESS OTHERWISE NOTED ON PLANS)
- HANDHOLES ARE MOUNTED AT 180° PLANT
- SUPPORT BRACKETS ARE MOUNTED AT 0° (UNLESS OTHERWISE NOTED ON PLANS)



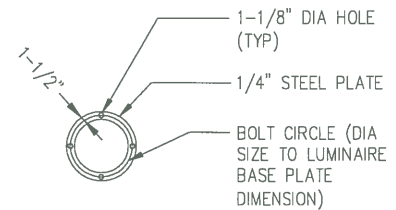
**FOUNDATION SECTION**



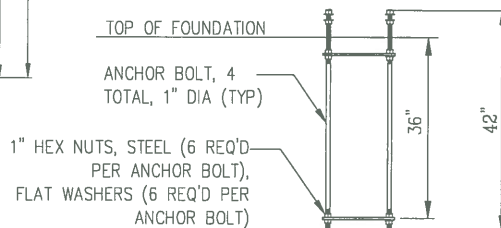
**POLE ELEVATION**



**FOUNDATION DETAIL**



**ANCHOR BOLT TEMPLATE DETAIL**



**ANCHOR BOLT ASSEMBLY DETAIL**

**FOUNDATION DETAILS**

NOTE: NO SONATUBE ALLOWED FOR FOUNDATION CONSTRUCTION



PUBLIC WORKS DEPARTMENT

ARTERIAL STREET  
 DECORATIVE PEDESTRIAN LUMINAIRE POLE  
 DETAILS

STD. PLAN- 117.2

APPROVED:

*Greg Summer* 5/5/17  
 DATE