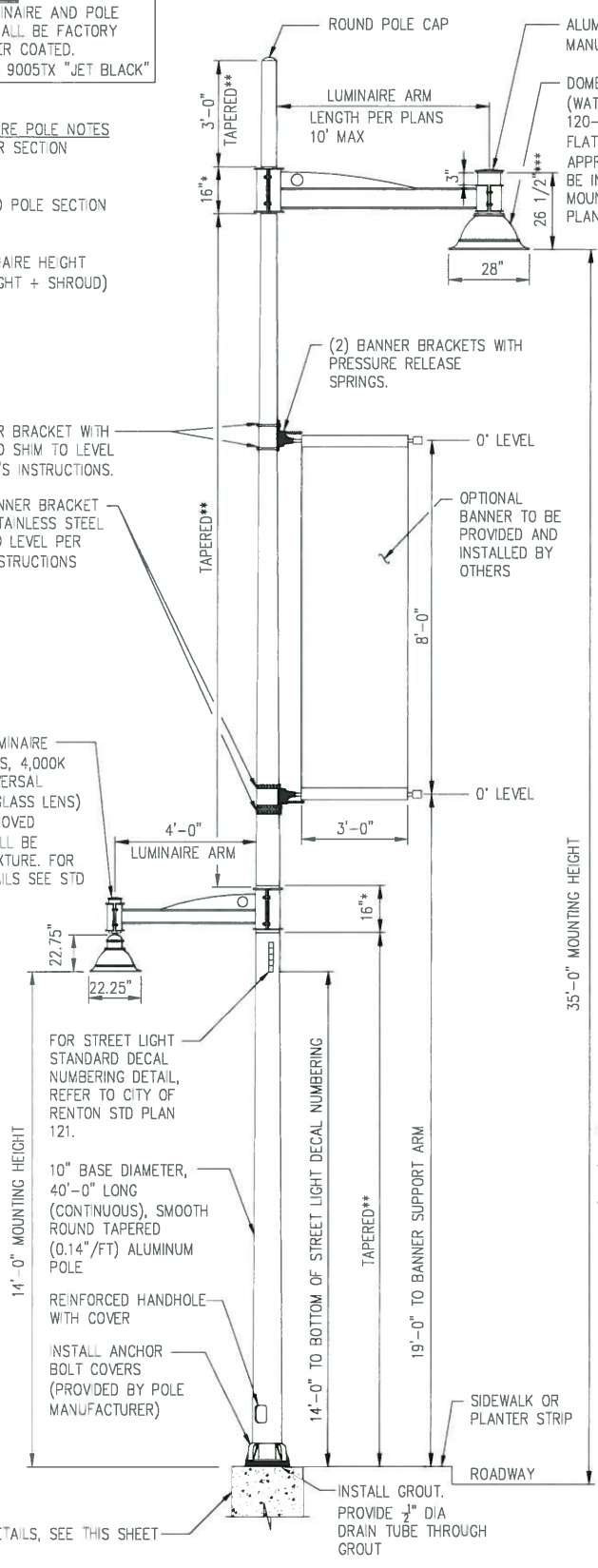


PAINT SPECIFICATIONS:
 ALL ALUMINUM LUMINAIRE AND POLE RELATED PARTS SHALL BE FACTORY PRIMED AND POWDER COATED.
 FINISH COLOR: RAL 9005TX "JET BLACK"

DECORATIVE LUMINAIRE POLE NOTES
 * ROUND TUBULAR SECTION (NO TAPER)
 ** ROUND TAPERED POLE SECTION (0.14"/FT)
 *** NOMINAL LUMINAIRE HEIGHT (LUMINAIRE HEIGHT + SHROUD)

SECURE TOP BANNER BRACKET WITH THROUGH BOLTS AND SHIM TO LEVEL PER MANUFACTURER'S INSTRUCTIONS.
 SECURE BOTTOM BANNER BRACKET WITH ADJUSTABLE STAINLESS STEEL BANDS AND SHIM TO LEVEL PER MANUFACTURER'S INSTRUCTIONS

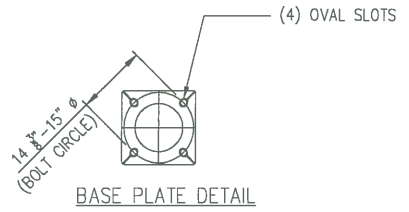
DOME STYLE LED LUMINAIRE (WATTAGE PER PLANS, 4,000K CCT, 120-277V UNIVERSAL DRIVER, WITH FLAT GLASS LENS) BY LUMEC (OR APPROVED EQUAL). DRIVER SHALL BE INTEGRAL TO THE FIXTURE. FOR MOUNTING ARM DETAILS SEE STD PLAN 117.3.



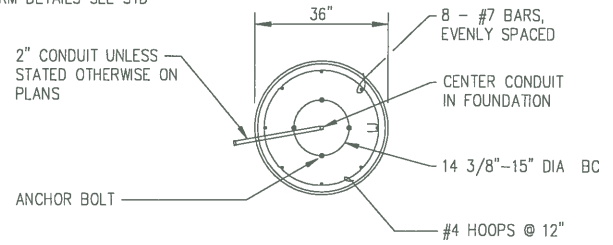
POLE ELEVATION

FOR FOUNDATION DETAILS, SEE THIS SHEET

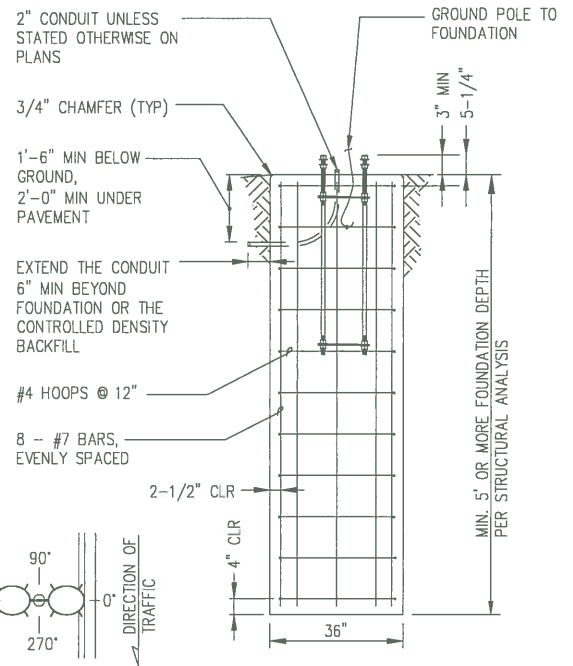
INSTALL GROUT. PROVIDE 3/8" DIA DRAIN TUBE THROUGH GROUT



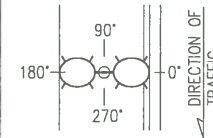
BASE PLATE DETAIL



FOUNDATION SECTION

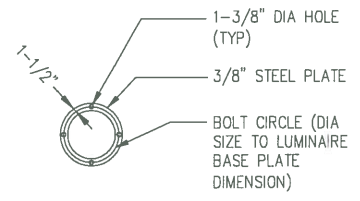


FOUNDATION DETAIL

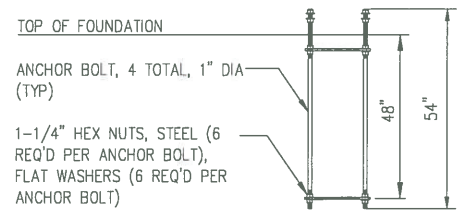


ORIENTATION LOCATION

- DECORATIVE ROADWAY LUMINAIRES ARE MOUNTED AT 0°
- DECORATIVE PEDESTRIAN LUMINAIRES ARE MOUNTED AT 180° HANDHOLES
- ARE MOUNTED AT 180°
- BANNER SUPPORT BRACKETS ARE MOUNTED AT 0°



ANCHOR BOLT TEMPLATE DETAIL



ANCHOR BOLT ASSEMBLY DETAIL

FOUNDATION DETAILS

NOTE: NO SONATUBE ALLOWED FOR FOUNDATION CONSTRUCTION



PUBLIC WORKS DEPARTMENT

ARTERIAL STREET DECORATIVE LUMINAIRE POLE DETAILS

STD. PLAN- 117.1
 APPROVED: *D. Zimmerman* 5/8/17
 DATE