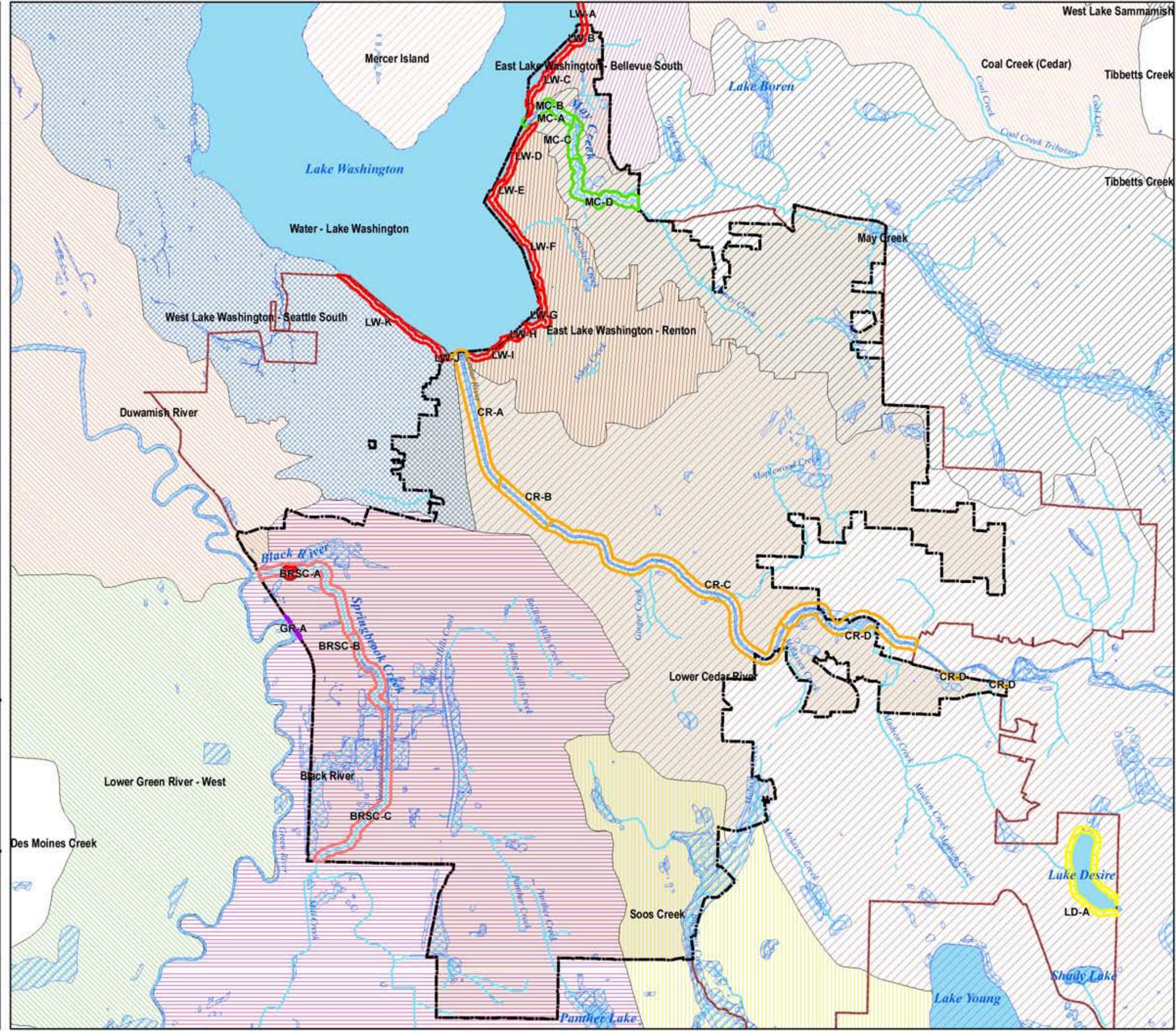
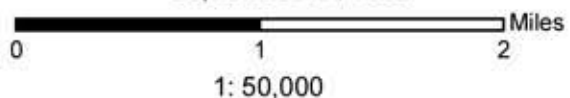


Shoreline Master Program Update City of Renton

Water Bodies and Wetlands Map 3-A



September 24, 2009



File Name: H:\CED\PLANNING\GIS\gis_projects\shoreline_mgmt_program\6SMP\mxds\3A_hydrology_11x17_0909.mxd

Actual Data Source: City of Renton 2009,
King County 2009 and ESA Adolfsen.

This map depicts the approximate location and extent of areas subject to the SMP. The actual extent of shoreline jurisdiction requires a site-specific valuation to identify the ordinary high water line and any associated wetlands. The location of the 20 cfs limit is from USGS (1998). Floodplain and floodway extent are based on FEMA mapping and Lower Green River Mapping Study by King County. Wetland locations are approximate and based on existing city/regional inventories; additional wetlands may be present that are not shown on the maps and some of the areas shown as wetlands may not meet the wetland criteria. This map makes no claim as to whether wetlands are associated with the shoreline or not.

Alex Pietsch, Administrator
Adriano A. Johnson, GIS Analysis Services

City of
Renton
Community & Economic Development



RENTON. AHEAD OF THE CURVE.